

## Handwheels

Engineered for seamless manual operation, our handwheels are designed to complement our range of gearboxes, providing precise control and smooth adjustment. Durable and reliable, they are available in various sizes and materials to suit diverse industrial applications.

### Features & Specifications

Sizes range from 175mm (7") to 1000 mm (40") in diameter

Fabricated from Carbon Steel Pipes

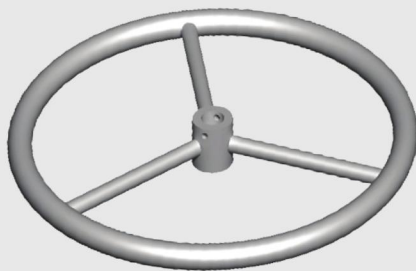
Also available in Solid Construction

Epoxy Powder Coating as standard

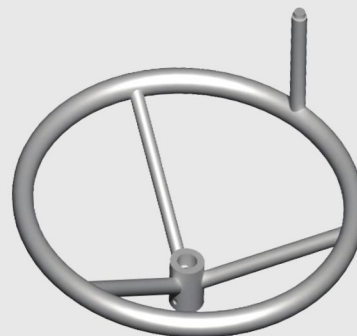
Also available in Stainless Steel

### Options available for Handwheels

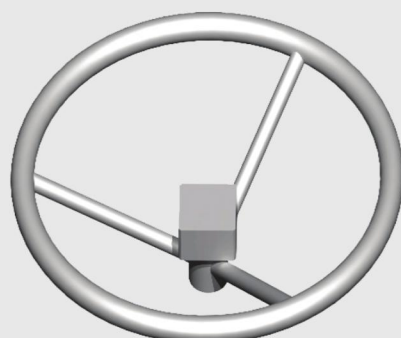
Flat Handwheel



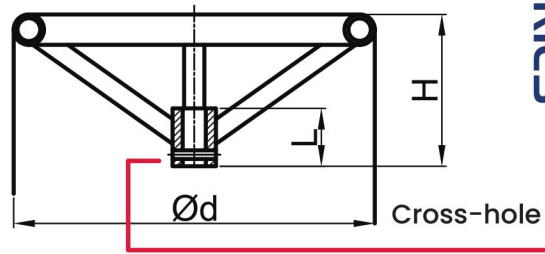
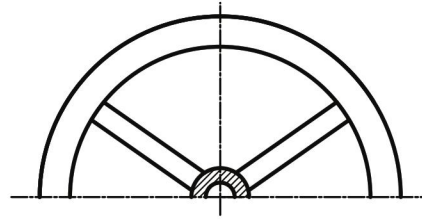
Handwheel with Handle



Handwheel with Integrated Square Nut

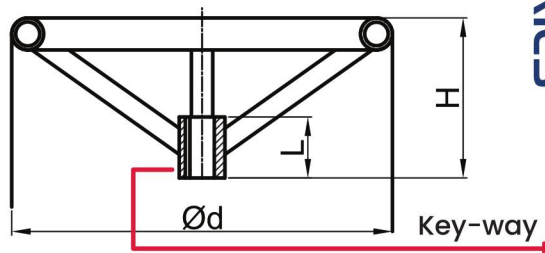
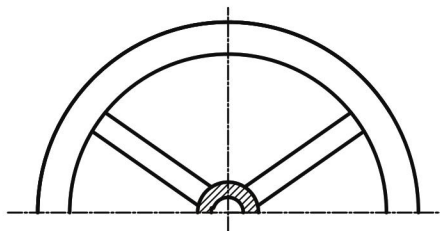


MODEL	Ød	H	L
H1	175	60	40
H2	200	90	40/50
H3	250	80	40/50
H4	300	110	40/50
H5	350	110	40/50
H6	400	130	40/50
H7	450	130	40/50
H8	500	150	40/50
H9	600	145	50
H10	750	170	50
H11	900	170	50
H12	1000	170	50



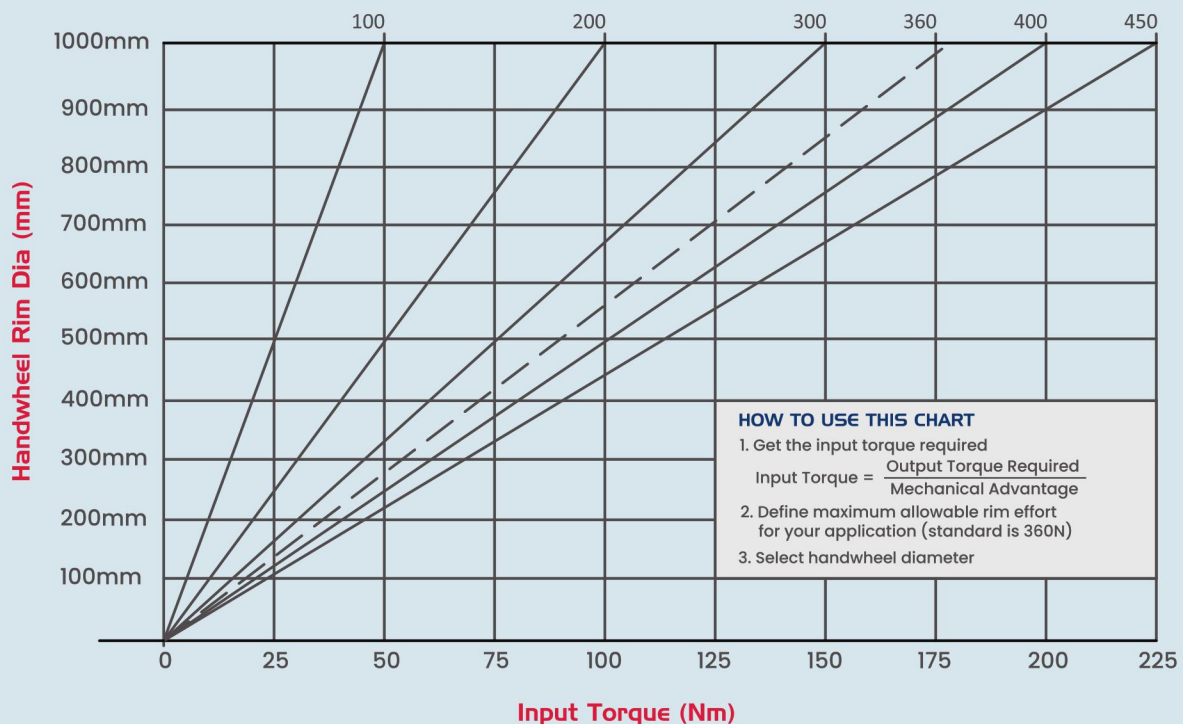
H SERIES

MODEL	Ød	H	L
K1	175	60	40
K2	200	90	40
K3	250	80	40/50
K4	300	110	40/50
K5	350	110	40/50
K6	400	130	40/50
K7	450	130	40/50
K8	500	150	40/50
K9	600	145	50
K10	750	170	50
K11	900	170	50
K12	1000	170	50



K SERIES

Rim Effort (N)



Handwheel Selection Chart